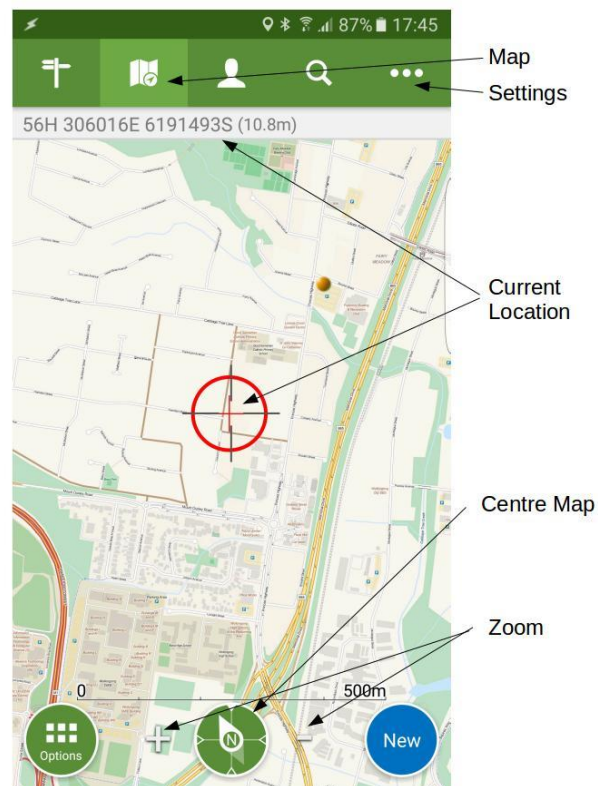




VIEWRANGER INSTRUCTION SUMMARY

[ViewRanger](#) is smart phone navigation app which can be downloaded from the [App Store](#) for iPhone/iPad or [Google Play](#) for Android.

When you run it for the first time it will give you the option to create an account. This is needed to upload tracks and use BuddyBeacon to share your location in real-time.



Location Crosshair shows current location

Centre Map Turns GPS on and centres map on current location.

Recommended Settings

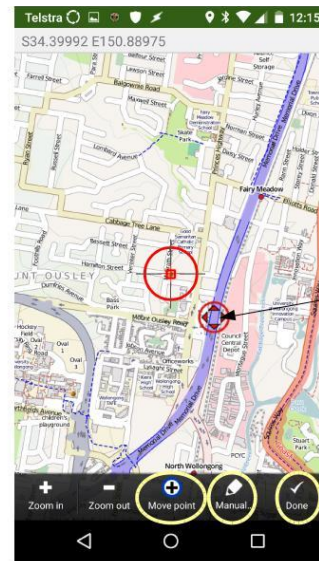
Setting	Value
Account name	Unit iPad iTunes account (e.g. tabops194@ses.nsw.gov.au) or your @member email address for personal devices
Display → Coordinate Type	UTM WGS84
GPS → GPS Mode	Power save
Beacon → PIN	1325
Beacon → Update Frequency	4 Minutes
Beacon – Auto Start	Enabled for iPads

Waypoints

Waypoints or Points Of Interest (POI) are saved locations that you can navigate to. To create one press the blue **New** button in the bottom right of the map screen and select **Add POI**. After you have given it a name you have a few options on how you want to create the waypoint.

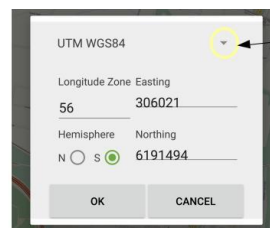
To save your current location just press the **Done** button at the bottom.

To select a position on the map for your waypoint use the red **Move Point on Map** widget to place the point where you want it. The **Move Point** button at the bottom of the screen lets you toggle between moving the point and moving the map. Press **Done** when the point is where you want it.



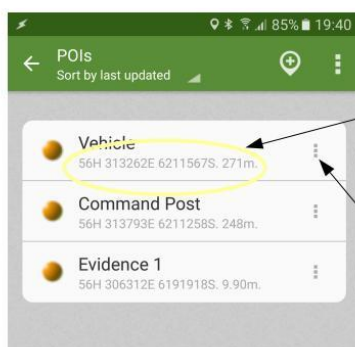
Move Point on Map

You can also manually enter coordinates for the waypoint by pressing the **Manual** button at the bottom of the screen. If you need to enter coordinates in a different format (e.g. Lat/Long) select the drop-down menu icon next to the coordinate type on the manual entry dialogue box.



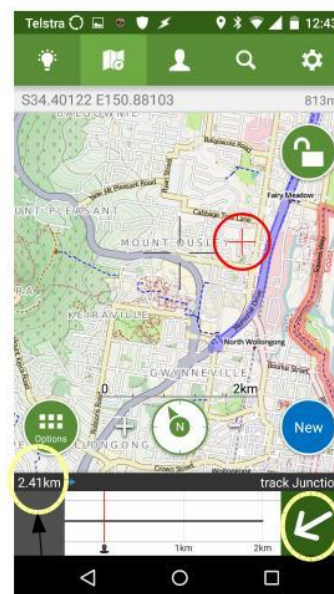
Menu

To access your waypoints choose **My Points Of Interest** from the **Settings** menu. To navigate to a waypoint select **Navigate to** from the waypoint's menu.



Location & Distance

Waypoint Menu



Distance

Direction

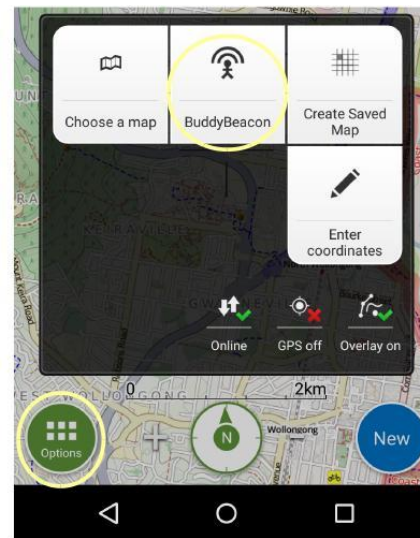
At the bottom of the map it will show you the distance to the waypoint and an arrow showing the direction to travel.

BuddyBeacon

BuddyBeacon allows you to report your location in real-time. To turn it on (if you haven't set it to auto start) press the green **Options** button at the bottom left of the screen and select **BuddyBeacon** then **Beacon Repeat on**.

Turning it off is via the same sequence.

You can track multiple BuddyBeacon users via the <http://www.viewranger.com/buddybeacon> website.



Full Documentation

<http://www.viewranger.com/en-us/support/support/manuals>